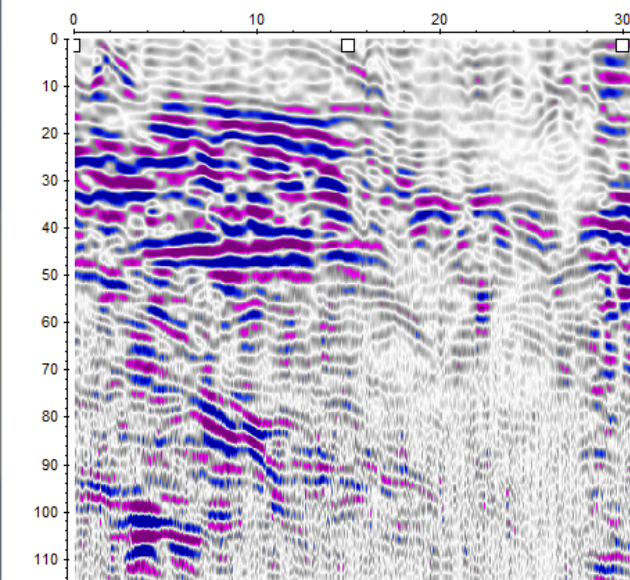


2. D:\ENRIQUE\RADAR\_WRK\PROCDATA\FILE\_\_\_029.07T / traces: 6751 / samples: 422



### SequenceProcessing

sequence processing

- ☐ actual processing flow
- ☐ markerinterpol/0.02/15 / 0 / 0 / 2 / 4
- ☐ subtract-mean(dewow)/10 / 0 / 0 / 1 / 6
- ☐ manual gain (y) / 0 / 0 / 1 / 6751
- ☐ static correction / 0 / 0 / 0 / 6751
- ☐ background removal/0/115,1172 / 0 / 0
- ☐ energy decay/0.8 / 0 / 0 / 1 / 6751
- ☒ bandpass/butterworth/100/300 / 2 / 1 /

ProcessingLabel: 0

☐ plot data

☐ SingleProcess

StartCurrentLine

StartSeveralLines

filefilter:

filepath:

BatchGroupBox

generate batchfile

start batchfile(s)

AddCurrentProc.

DeleteProc.

ResetSequence

LoadSequence

SaveSequence

Exit

### 1D-Filter

filter specification

- ☐ meanfilter
- ☐ medianfilter
- ☐ bandpassfrequency
- ☒ bandpassbutterworth
- ☐ filter/timedependent
- ☐ notchfilter/frequ.
- ☐ deconvolution
- ☐ deconvolution/shap.
- ☐ subtract-mean(dewow)
- ☐ subtract-DC-shift
- ☐ crosscorrelation
- ☐ autocorrelation
- ☐ resampling
- ☐ walsh bandpass
- ☐ shaping
- ☐ extract wavelet

distance range

☒ all traces

1. trace: 1

last trace: 6751

trace number: 3228

original

filtered

reference trace

original spectrum

filtered spectrum

ProcessingLabel: 7

☒ Apply on example trace

Start

Close



